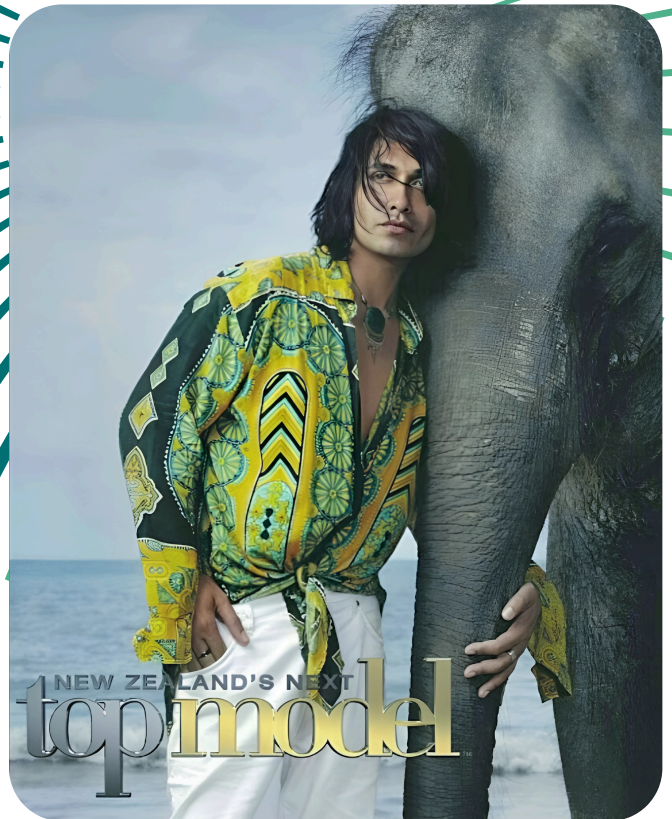




COLIN MATHURA- JEFFREE

Location: Auckland



Colin Mathura-Jeffree is an iconic figure in New Zealand and beyond fashion, entertainment, and philanthropy. Renowned for his charismatic presence and unwavering commitment to excellence and elegance, Colin epitomises the essence of style, sophistication, and social responsibility.

Colin's journey to prominence is a testament to his indomitable spirit and entrepreneurial acumen. With a background steeped in the diverse cultural tapestry of Anglo-Indian heritage, he brings a unique perspective that resonates with audiences from all walks of life.

Colin's illustrious career spans various domains, each marked by huge local and international achievements and accolades. As the esteemed VIP Ambassador for New Zealand Fashion Week from 2011 to 2017, he graced the runway with an effortless elegance, setting trends and captivating hearts along the way. His pivotal role in inaugurating the event in 2016 solidified his status as a trailblazer in the fashion landscape, earning him widespread acclaim and adulation.

Notably, Colin's magnetic charm and undeniable charisma have garnered him prestigious titles, including New Zealand's Sexiest Man and Man of the Year in 2012, as bestowed by Metro. With his ocean-green eyes that mirror the tranquil beauty of New Zealand's landscapes, Colin captivates audiences with an innate allure that transcends borders and cultures.

Beyond the glitz and glamour of the entertainment industry, Colin is a staunch advocate for philanthropic causes, embodying the ethos of compassion and social responsibility. His partnership with The Railway Children, a UK-based charity dedicated to aiding vulnerable children, underscores his unwavering commitment to making a positive impact on society. Inspired by personal experiences and fueled by a desire to effect change, Colin tirelessly champions the cause, pledging to raise awareness and funds to support the organisation's noble endeavours.



COLLABORATE
MANAGEMENT

collaborators@collaborate.co.nz | +64 9 908 9000 | collaborate.co.nz

Moreover, Colin's role as Alzheimer's New Zealand's inaugural champion for dementia reflects his deep-seated empathy and dedication to fostering greater understanding and support for individuals affected by the condition. With a personal connection to the cause stemming from his grandmother's battle with Alzheimer's disease, he endeavours to amplify awareness and advocate for enhanced care and research initiatives.

Colin Mathura-Jeffree is not merely a celebrity or an influencer; he is a person of inspiration and empowerment, illuminating paths of possibility and philanthropy. His multifaceted persona, characterised by charm, style, and social consciousness, renders him an exemplary choice for corporate events and celebrity guest appearances, where his presence promises to elevate occasions and leave a lasting impression on all who have the privilege of encountering him.

SKILLS

Accents	Indian
Dance	Ballroom
Other	Voiceovers
Sports	Horse Riding, Martial Arts, Swimming